

Agilent E1779A

Rechargeable Battery Pack

Product Overview



*Snap on DC power
provides freedom from
the AC power mains*

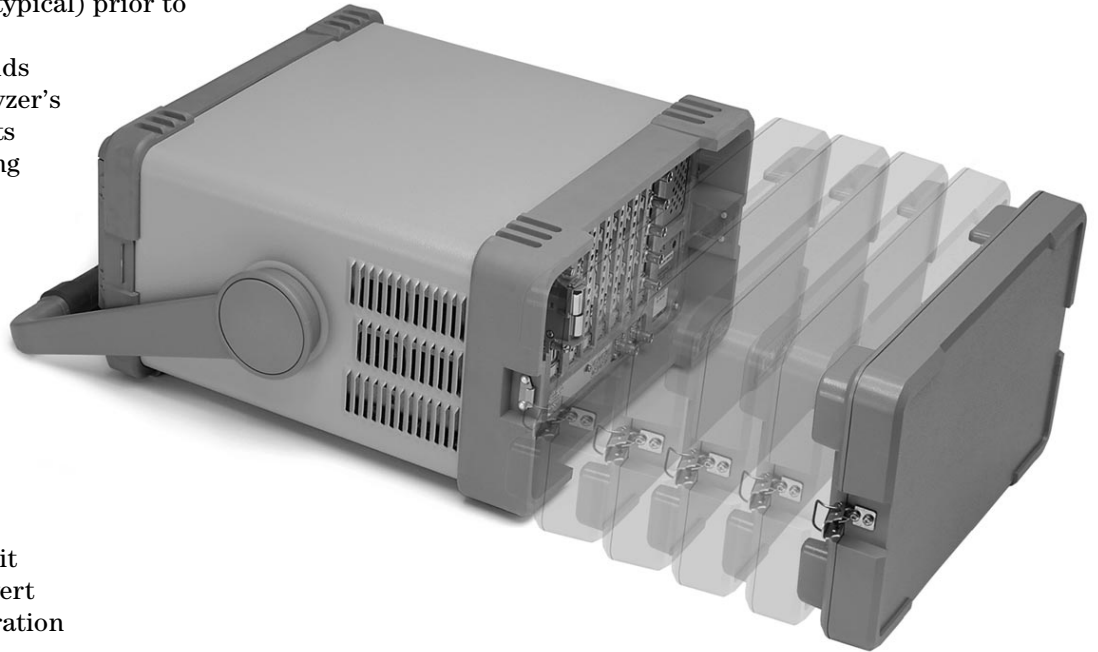
Cordless Spectrum Analysis for Agilent ESA-L1500A



Agilent Technologies
Innovating the HP Way

Spectrum analysis in the field without AC power

- Operate the ESA-L1500A spectrum analyzer from 1.4 to 1.9 hours (typical) prior to recharging.
- The Agilent E1779A adds only 4.8 kg to the analyzer's weight and 44 mm to its depth while maintaining access to rear panel connectors.
- Attached to the rear of the analyzer, the battery pack is designed to match the rugged portability and appearance of the ESA-L1500A.



Easy to use

- Snap-on design makes it quick and easy to convert the analyzer to dc operation or swap battery packs.
- Built-in smart-charger monitors battery temperature, current, and voltage to prevent overcharging. When recharging is complete, trickle charging maintains the battery at full potential so it's ready when you are.
- Recharges in just 6 hours at 25° C using the supplied AC adapter.
- The included DC contact adapter provides simple and reliable electrical connection between the battery and the analyzer.



Operational Characteristics

The following information describes characteristic performance based at a temperature of 25° C unless otherwise noted.¹

Output voltage	19.2 Volts
Capacity	105 Watt hours
Typical operation times	
ESA-L1500A (no options)	up to 1.9 hours
ESA-L1500A (Opt. A4H, A4J)	up to 1.8 hours
ESA-L1500A (Opt. A4H, 1DN)	up to 1.4 hours
Operation/discharge temperature	0 to 55° C
Charge time	6 hours at 25° C (charge time will increase at temperatures above 25° C)
Charge temperature	10 to 40° C
Service life	500 charge/discharge cycles (to 80% of initial capacity at 25° C)
Recommended storage temperature	-30 to 30° C
Permissible storage temperature	-30 to 55° C (service life degrades rapidly with prolonged storage at temperatures above 40° C)
Maximum relative humidity	80% (for temperatures up to 31° C)
Altitude	up to 4,572 meters
Chemistry	nickel cadmium
EMI compatibility	CISPR 11:1990 Group 1, Class A radiated and conducted emissions

Physical characteristics¹

Weight	4.8 kg
Height	217 mm
Width	373 mm
Depth	68 mm (44 mm added to analyzer depth)

AC adapter characteristics¹

Input voltage range	90 to 254 Vac
Input frequency range	47 to 66 Hz
Input power	60 W
Output voltage	24 Vdc

Compatibility

ESA-L1500A spectrum analyzer (E4411A)	serial prefix US3745 or greater (Agilent E4411AU Option R12 upgrade kit is available for analyzers with serial prefixes prior to US3745)
--	--



¹ Characteristics describe product performance that is useful in the application of the product, but is not covered by the product warranty.

Ordering Information

Model

E1779A

Description

Rechargeable battery pack for ESA-L1500A spectrum analyzer (E4411A)

E4411AU Option R12

Upgrade kit for ESA-L1500A spectrum analyzers with serial prefixes prior to US3745

By internet, phone, or fax, get assistance with all your test and measurement needs.

Online Assistance

www.agilent.com/find/assist

Phone or Fax

United States:

(tel) 1 800 452 4844

Canada:

(tel) 1 877 894 4414

(fax) (905) 206 4120

Europe:

(tel) (31 20) 547 2323

(fax) (31 20) 547 2390

Japan:

(tel) (81) 426 56 7832

(fax) (81) 426 56 7840

Latin America:

(tel) (305) 269 7500

(fax) (305) 269 7599

Australia:

(tel) 1 800 629 485

(fax) (61 3) 9210 5947

New Zealand:

(tel) 0 800 738 378

(fax) (64 4) 495 8950

Asia Pacific:

(tel) (852) 3197 7777

(fax) (852) 2506 9284

Product specifications and descriptions in this document subject to change without notice.

Copyright © 1997, 2000 Agilent Technologies

Printed in U.S.A. 9/00

5966-1851E



Agilent Technologies

Innovating the HP Way